

FIG. 11

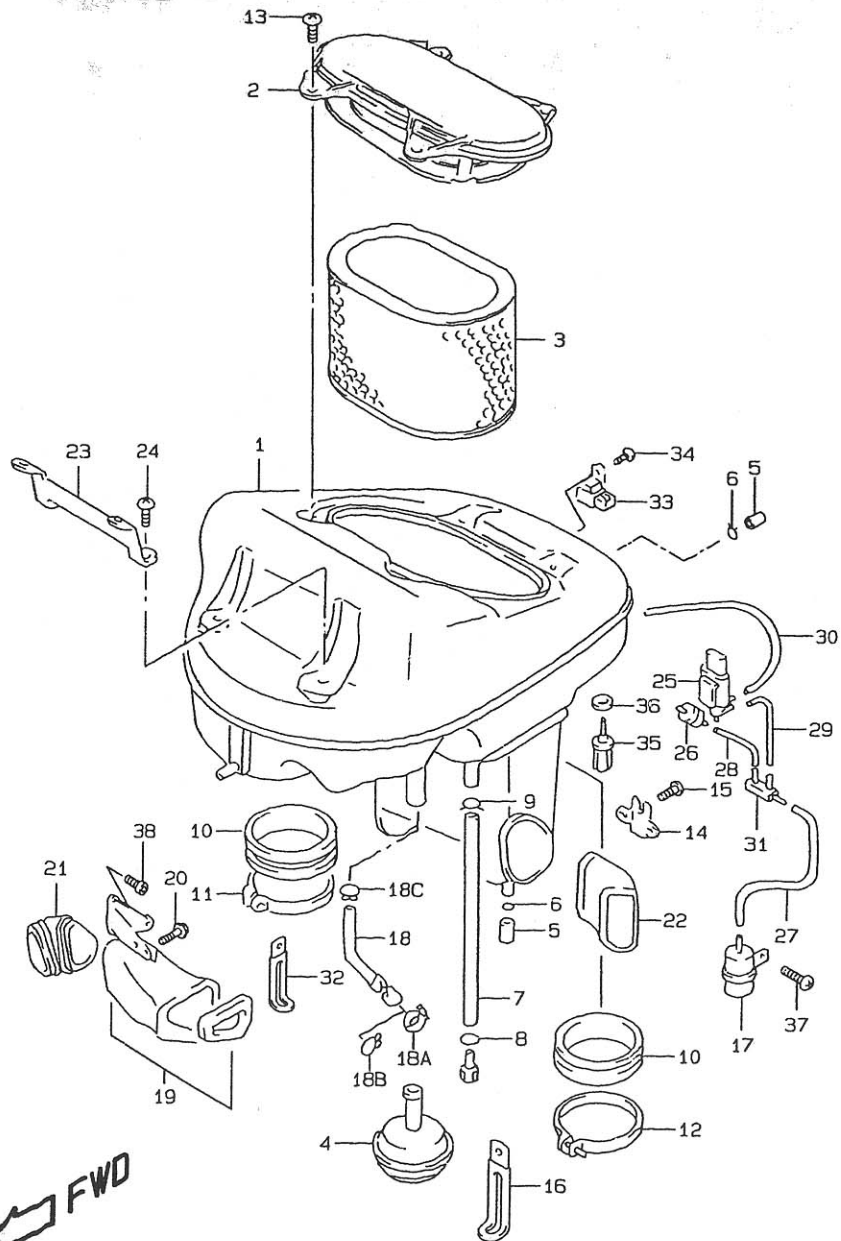


FIG.11 (C-10) AIR CLEANER

REF.NO.	PART NO.	DESCRIPTION	Q'TY	REMARKS
1	13700-02F00	CLEANER ASSY, AIR	1	
2	13740-02F00	.CAP	1	
3	13780-02F00	.FILTER	1	
4	13895-02F00	.DIAPHRAGM	1	
5	13859-41B10	.PLUG, BREATHER	2	
6	09401-14301	.CLIP	2	
7	13870-11218	.TUBE, DRAIN	1	
8	09401-11101	.CLIP	1	
9	09401-13409	.CLIP	1	
10	13881-02F00	.TUBE, OUTLET	2	
11	13826-02F00	.CLAMP	1	
12	13826-02F00	.CLAMP	1	
13	02142-05123	.SCREW	4	
14	18116-02F00	.BRACKET, SOLENOID VALVE	1	
15	02142-05103	.SCREW	2	
16	09404-06432	.CLAMP	1	
17	13715-02F00	CHAMBER, VACUUM	1	
18-1	13851-02F00	TUBE, BREATHER	1	MODEL V
18-2	13851-02F10	TUBE, BREATHER	1	MODEL W/X
18A	09402-28511	CLAMP	1	MDOEL V
18B	09401-15301	CLIP	1	MODEL W/X
18C	09401-14403	CLIP	1	
19	13890-02F00	DUCT, AIR CLEANER	1	
20	01580-06123	.BOLT	2	
21	13892-02F00	BOOT, AIR INLET RH	1	
22	13893-02F00	BOOT, AIR INLET LH	1	
23	13980-02F00	BRACKET	1	
24	02142-06123	BOLT	4	
25	18115-70G10	VALVE ASSY, SOLENOID	1	
26	95569-78040	VALVE, CHECK	1	

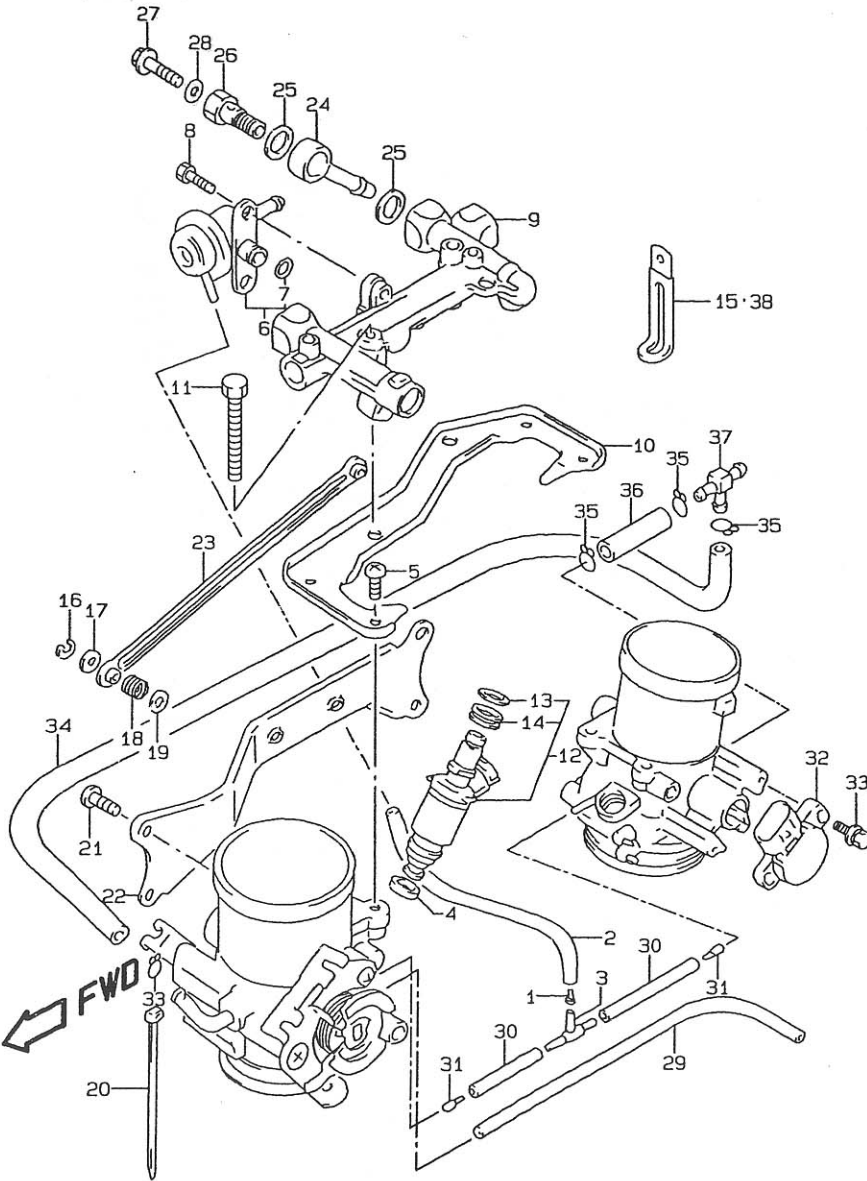
TL1000SX E3/E28

FIG. 10A

FIG. 10A(C- 8) THROTTLE BODY FITTING PARTS

Q'TY

REMARKS



REF.NO.	PART NO.	DESCRIPTION	Q'TY	REMARKS
1	09493-50006	JET	1	
2	13682-02F10	HOSE	1	
3	09367-04007	NIPPLE	1	
4	09320-08062	CUSHION	2	
5	13602-06148	SCREW	4	
6-1	15610-02F00	REGULATOR, FUEL PRESSURE	1	MODEL V/W
6-2	15610-02F10	REGULATOR, FUEL PRESSURE	1	MODEL X
7	15710-09300	.O RING	1	
8	13612-02F00	BOLT	2	
9	15731-02F00	PIPE ASSY, DELIVERY	1	
10	13625-02F00	PLATE	1	
11	13612-02F10	BOLT	2	
12-1	15710-02F00	INJECTOR ASSY	2	MODEL V
12-2	15710-02FA0	INJECTOR ASSY	2	MODEL W/X
13-1	15710-09300	.O RING	2	MODEL V
13-2	15717-02F00	.O RING	2	MODEL W/X
14	15720-09300	.GROMMET	2	
15	09404-06432	PLATE	2	
16	13617-44500	E RING	2	
17	13615-02F10	RING	2	
18	13543-02F00	SPRING	2	
19	13615-02F20	RING	2	
20	13671-02F00	CLIP	1	
21	13602-02F00	SCREW	4	
22	13626-02F00	PLATE	1	
23	13540-02F00	LEVER ASSY	1	
24	15815-02F00	CONNECTOR	1	
25	13925-85553	GASKET	2	
26	13923-85551	BOLT	1	
27	17568-50F00	PLUG	1	
28	09168-06023	GASKET	1	
29	13681-02F00	HOSE	1	
30	13682-02F00	HOSE	2	
31	09493-20015	JET	2	
32	13580-02F00	SENSOR ASSY, THROTTLE	1	
33	13605-02F00	BOLT	2	

TL1000SX E3/E28

FIG. 18

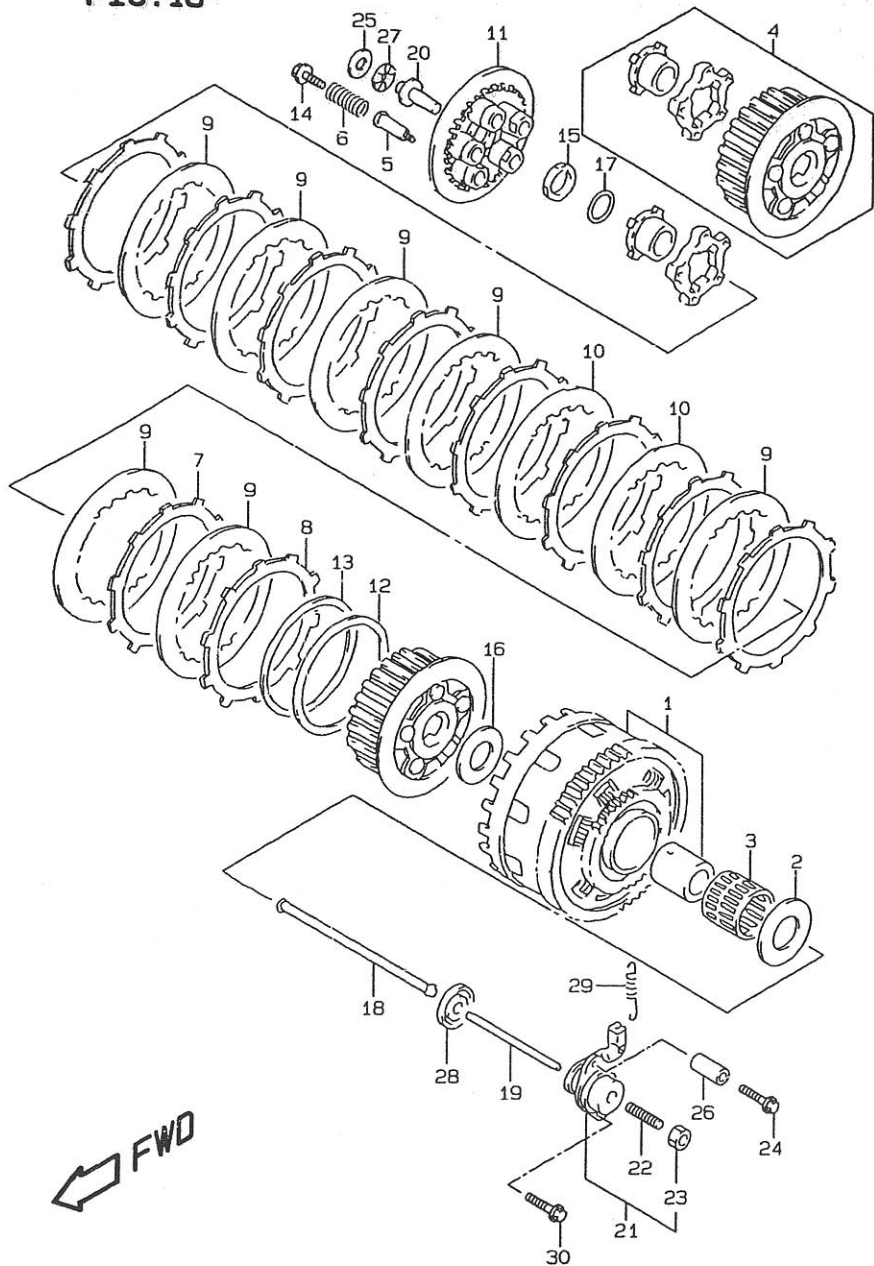


FIG.18 (D- 7) CLUTCH (MODEL V/W)

REF.NO.	PART NO.	DESCRIPTION	Q'TY	REMARKS
1	21200-02810	GEAR ASSY, PRIMARY DRIVEN	1	
2-1	09160-25067	WASHER (25X54X2.5)	1	MODEL V
2-2	09160-25071	WASHER (25X54X2.5)	1	MODEL W
3	09263-35017	BEARING (35X40X35.8)	1	
4	21610-02F00	CAM SET, CLUTCH	1	
5	21411-02F00	BOLT, CLUTCH SPRING	5	
6	21413-02F00	SPRING, CLUTCH ASSIST	5	
7	21441-31E40	PLATE, CLUTCH DRIVE NO.1	9	
8	21442-31E00	PLATE, CLUTCH DRIVE NO.2	1	
9	21451-31E00	PLATE, CLUTCH DRIVEN NO.1	7	T:1.6
10	21451-31E10	PLATE, CLUTCH DRIVEN NO.2	2	T:2.0
11	21462-02F00	DISK, CLUTCH PRESSURE	1	
12	21471-31E00	SEAT, WAVE WASHER	1	
13	21472-31E01	WASHER, CLUTCH PLATE WAVE	1	
14	21482-13E00	BOLT, CLUTCH SPRING	5	
15	09159-24010	NUT, CLUTCH SLEEVE HUB	1	
16-1	09160-25056	WASHER, CLUTCH SLEEVE	1	MODEL V 25X50X2.5
16-2	09160-25072	WASHER, CLUTCH SLEEVE	1	MODEL W 25X50X2.5
17	09164-24006	WASHER, CLUTCH SLEEVE	1	24.2X35X2
18	23110-38B00	ROD, CLUTCH PUSH RH	1	
19	23111-34C00	ROD, CLUTCH PUSH LH	1	
20	23121-38B00	PIECE, CLUTCH PUSH	1	
21	23200-15500	SCREW ASSY, CLUTCH RELEASE	1	
22	09134-06010	.SCREW	1	
23	08310-00067	.NUT	1	
24	09103-06197	BOLT, CLUTCH RELEASE	1	
25	09160-15045	WASHER, CLUTCH PUSH	1	15.5X28X1
26	09180-06322	SPACER, CLUTCH RELEASE	1	
27	09263-15003	BEARING, CLUTCH PUSH	1	15X28X2
28	09285-06015	SEAL, CLUTCH PUSH	1	6X34X5.5
29	09443-08047	SPRING, CLUTCH RELEASE	1	
30	01550-06603	BOLT	1	
31	21440-02F00	CLUTCH PLATE SET	1	OPTIONAL, NOT SHOWN

REFER TO FIG.18A(D- 8) FOR MODEL X

TL1000SX E3/E28